



St Paul's School Case Study

Industry: Education

Challenges:

- No resilience in place in case of link failure and Internet access is critical to daily operations
- Existing ISP circuit is constantly overloaded
- Expanding current ISP circuit proved too expensive
- Existing infrastructure provided no means to manage traffic flows

Solution:

- The Elfiq Link LB-1500E provides the ability to manage up to sixteen ISP links concurrently, meeting the current and future requirements of St Paul's School
- To complement the existing 10Mbps symmetrical link, a 3X bonded DSL circuit was added to meet demand
- Elfiq Networks' professional services were utilized to deploy the project

Benefits:

- The school has bandwidth to meet user demand without having to go over budget
- Should a link fail, the other link will dynamically handle all traffic until the failed link is restored
- Traffic can be routed to certain links depending on the policies on the unit
- Should the Elfiq lose power, bandwidth is still available.

“We chose Elfiq after an extensive investigation of similar products. Elfiq offered by far the most comprehensive feature set and the best support at an unbeatable price. The product has been performing better than we might have expected and is now a critical part of our infrastructure. Our sincere thanks to the Elfiq team for their great support.”

Andy Reid

IT Manager

St Paul's School

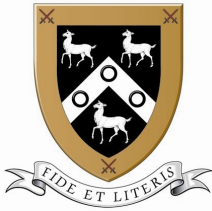
Overview

St Paul's School is an independent secondary school for boys in Barnes, London (UK). Founded in 1509, a total of 1,200 students between the ages of 7 and 18 are offered an extended curriculum in the arts, languages and sciences. The school places a strong emphasis on technology, and the extensive IT infrastructure contributes to its reputation as the top performing boys' school in the country.”

Challenges

St Paul's School Internet access had become critical for both student and staff for daily operations. In this context, the existing 10Mbps link was regularly congested due to user demand and with new technologies available on the Internet, usage was expected to increase.

The existing infrastructure was not able to proactively manage traffic and allocate bandwidth against specific traffic. Bandwidth-intense traffic would use traffic in such a way other users would have limited throughput. The single link provided a strategic point of failure; should it become unavailable, no failover was in place to ensure continuity of operations.



St Paul's School Case Study

Solution

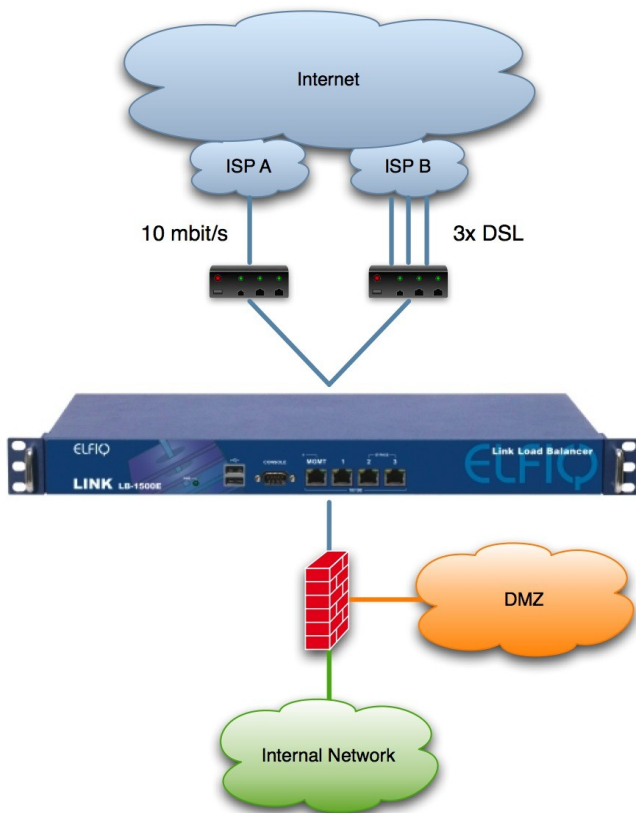
The IT department compiled a list of requirements and contacted vendors for the bandwidth project, and Elfiq Networks was retained for its seamless integration, feature set and performance.

The LB-1500E was selected and Elfiq's professional services team assisted St Paul's School with planning and deploying the unit.

Elfiq's seamless integration required no modification to the existing infrastructure and the unit was installed in minutes.

To complement the existing 10Mbps circuit, a triple-bonded DSL link from a local carrier was added providing an incremental 24Mbps of download throughput to meet user demand.

Overview of St Paul's School Elfiq implementation



Benefits

With the Elfiq Link Balancer in place, the school has adequate bandwidth for its needs and when additional performance is required, incremental links can be easily added.

The Elfiq Link Balancer ensures continuity through dynamic failover of bandwidth should a link fail, and when it becomes available again the unit will use it normally.

Now the school can also decide which link will be used for different traffic types, and complements this approach with Elfiq's Quality of Service technology,

Elfiq's LAN Failsafe technology ensures bandwidth is available, and even if the unit loses power, the firewall and the original 10Mbps link will be enabled by the Elfiq unit acting as a pass-through, bringing a new level of business continuity to the Link Balancer market.

Elfiq Link LB-1500E



Maximum number of WAN links	16
Maximum throughput	90Mbps
Maximum number of concurrent sessions	384,000
Seamless integration	Yes, standard
SitePathMPTX link multiplexing	Yes, standard
LAN Failsafe Technology	Yes, standard
Quality of Service management	Yes, standard
Intelligent Service Verifier	Yes, standard
Intelligent DNS	Yes, standard
Denial of Service protection	Yes, standard Session Guard
Maximum number of virtual balancers	1
Format	1U unit

To learn more about how Elfiq Networks can help your organization maximize its IT infrastructure please contact us at: sales@elfiq.com • www.elfiq.com • 888-GO-ELFIQ • (+1) 514-667-0611